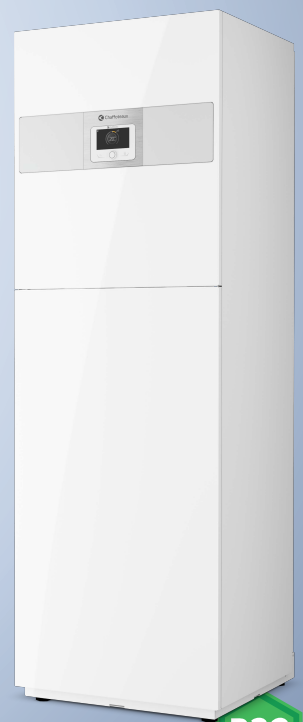




SPLIT AIR/WATER HEAT PUMP

ARIANEXT COMPACT S LINK R32

Split inverter heat pump with ecological R32 gas.
For heating, cooling and domestic hot water with
integrated 180 lt boiler.



R32



ENERGY EFFICIENCY CLASS



> HIGH PERFORMANCE

- Very high efficiency, even in harsh climates
- Maximum silence, up to 52 dB(A)
- Minimized domestic water heating times
- Thanks to the DHW electric resistance (optional) it is possible to satisfy the heating and cooling needs at the same time hot water

> EASY INSTALLATION

- Integrated magnetic filter as standard
- 12 lt expansion tank integrated as standard
- 8 lt expansion tank for sanitary fixture that can be integrated inside
- 15 lt puffer that can be integrated inside (for 1 zone models)
- Simplified and unified connection kits for different types of installation
- Available in version with integrated double zone

> SMART CONNECTIVITY

- Built-in Wi-Fi
- Expert HD system interface as standard, which can be integrated on the product
- Remote control via ChaffoLink App
- Remote assistance service available as an option
- Voice control via Amazon Alexa and Google Assistant

> SIMPLIFIED MAINTENANCE

- Easy access front door
- Highly insulating coating that prevents condensation from forming

Nominal power
FROM 3,5 At
15 kW

Silence UP TO
52 dB(A)

Domestic water
INTEGRATED BOILER

Connectivity
STANDARD

TECHNICAL DATA

MODEL		35 S LINK R32	50 S LINK R32	80 S LINK R32	120 S LINK R32	150 S LINK R32
Warm-up performance*						
Nominal heat output (Ta +7°C, Tw 35°C)	kW	3,5	5,0	8,0	11,8	15,0
COP nom (Ta +7°C, Tw 35°C)		5,1	5,0	4,8	4,7	4,5
Useful thermal power at full capacity(Pn**) (Ta +7°C, Tw 35°C)	kW	5,9	6,7	8,7	12,0	15,0
COP to Pn (Ta +7°C, Tw 35°C)**		4,6	4,5	4,6	4,7	4,5
Nominal heat output(Ta -7°C, Tw 35°C)	kW	3,5	5,0	7,4	9,41	10,45
COP nom (Ta -7°C, Tw 35°C)		3,1	2,9	3,0	3,16	3,1
Cooling performance**						
Nominal heat output (Ta 35°C, Tw 18°C)	kW	4,1	4,6	7,0	11,0	13,1
EER nom (Ta 35°C, Tw 18°C)		5,3	4,6	4,7	4,2	3,7
Nominal heat output(Ta 35°C, Tw 7°C)	kW	3,5	5,0	7,0	9,8	10,9
EER (Ta 35°C, Tw 7°C)		3,4	2,9	3,1	2,8	2,7
Performance in domestic hot water***						
Loading profile		L	L	L	L	L
Nominal storage volume	lt	180	180	180	180	180
Warm-up time	h:min	1:55	1:31	1:03	0:54	0:50
Stand-by power input (Pes)	W	38	38	38	38	38
T set point	°C	52,5	52,5	52,5	51,5	51,5
COP in domestic hot water		3,10	3,10	3,10	3,10	3,10
Maximum quantity at unloading (Vmax)	lt	233	233	233	224	224
ERP data						
Energy class in heating35°C /55 °C		A+++/A++	A+++/A++	A+++/A++	A+++/A++	A+++/A++
Domestic hot water energy class		A+	A+	A+	A+	A+

Codes						
1 zone models	Single phase	3302042	3302044	3302046	3302050	3302054
	Three-phase	-	-	3302048	3302052	3302056
2 zone models	Single phase	3302043	3302045	3302047	3302051	3302055
	Three-phase	-	-	3302049	3302053	3302057

*Data calculated according to UNI EN 14511

Data required for application for access to tax incentives (Ecobonus 65% and Superbonus 110% ref. Ministerial Decree 6 August 2020 - Technical requirements decree; Thermal Account ref. Ministerial Decree 16.02.2016) *Data calculated according to UNI EN 16147





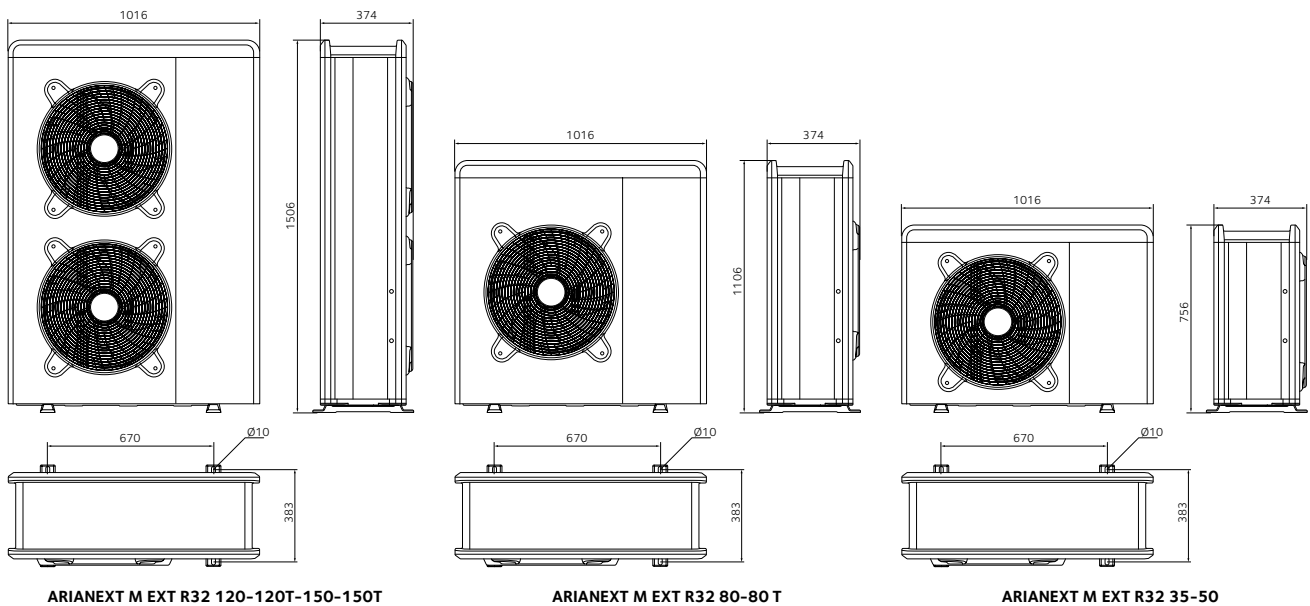
OUTDOOR UNIT

ARIANEXT S EXT R32

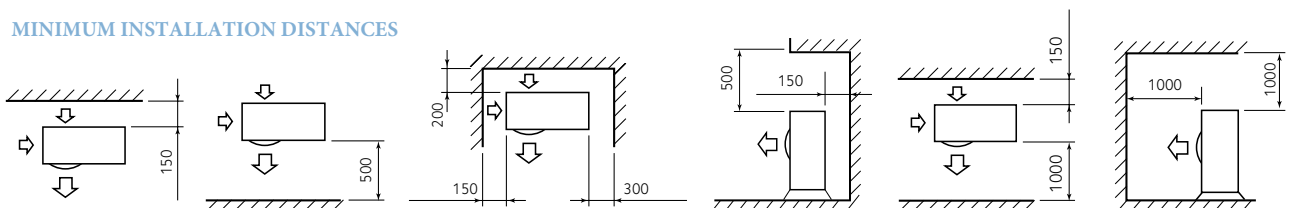
The Arianext S Ext R32 outdoor unit is equipped with a brushless motor for maximum operating silence and a twin rotary compressor which ensures silent and efficient operation even at partial loads and in harsh climates. Inverter control to adapt the power supplied to that required by the system at any time, minimizing on/off cycles and 1" water connections.



DIMENSIONS



MINIMUM INSTALLATION DISTANCES



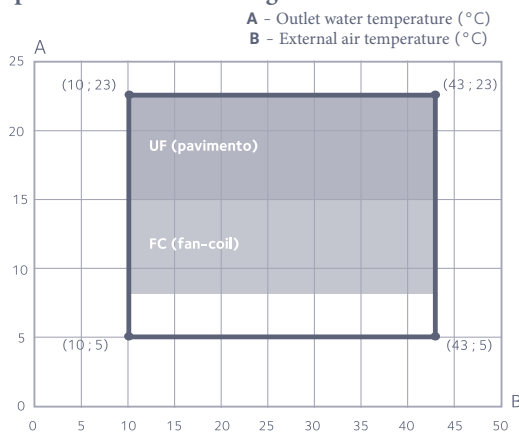
NOTE: Sold exclusively within one of the ARIANEXT M LINK R32 packages

TECHNICAL FEATURES

ARIANEXT		35 S EXT	50 S EXT	80 S EXT	80 S-T EXT	120 S EXT	120 S-T EXT	150 S EXT	150 S-T EXT
HEATING (heat pump performance)									
T flow min/max	°C	20/60							
T air min/max	°C	-20/35							
T air +7°C, T water 35/30°C									
Nom									
Thermal power	kW	3,50	5,00	8,00	8,00	11,80	11,80	15,01	15,01
Absorbed power	kW	0,69	1,00	1,67	1,67	2,49	2,49	3,31	3,31
COP nom		5,10	5,00	4,80	4,80	4,74	4,74	4,50	4,50
T air -7°C, T water 35/30°C									
Nom									
Thermal power	kW	3,51	5,00	7,41	7,41	9,41	9,41	10,95	10,95
Absorbed power	kW	1,13	1,72	2,47	2,47	2,97	2,97	3,55	3,55
COP nom		3,1	2,90	3,00	3,00	3,16	3,16	3,10	3,10
T air +7°C, T water 45/40°C									
Nom									
Thermal power	kW	3,00	4,05	6,00	6,00	8,16	8,16	9,89	9,89
Absorbed power	kW	0,8	1,11	1,62	1,62	2,12	2,12	2,51	2,51
COP nom		3,74	3,65	3,70	3,70	3,86	3,86	3,95	3,95
COOLING (heat pump performance)									
T flow min/max	°C	5/23							
Tair min/max	°C	10/43							
T air 35°C, T water 7/12°C									
Nom									
Thermal power	kW	3,50	5,00	7,00	7,00	9,75	9,75	10,89	10,89
Absorbed power	kW	1,03	1,75	2,26	2,26	3,49	3,49	4,10	4,10
EER nom		3,40	2,85	3,10	3,10	2,79	2,79	2,70	2,70
T air 35°C, T water 18/23°C									
Nom									
Thermal power	kW	4,08	4,63	7,00	7,00	11,05	11,05	13,13	13,13
Absorbed power	kW	0,77	1,02	1,49	1,49	2,61	2,61	3,52	3,52
EER nom		5,29	4,56	4,70	4,70	4,23	4,23	3,70	3,70
ErP DATA (medium climate, low flow temperature)									
External unit sound power	dB(A)	53	55	57	57	57	57	57	57
Annual energy absorbed	kWh/year	2790	3360	4405	4405	5384	5384	6151	6151
Seasonal yield	%	134	136	140	140	141	141	151	151
OUTDOOR UNIT ARIANEXT									
Weight	kg	57	57	83	96	111	111	119	119
Refrigerant type		R32							
Refrigerant charge	g	1400	1400	1800	1800	1840	1840	1840	1840
GWP		675							
CO ₂ equivalent	t	0,95	0,95	1,22	1,22	1,24	1,24	1,24	1,24
Inlet - outlet pipe connection	Inches	5/8-3/8							
Voltage/phases/frequency	v/ph/Hz	230-1-50	230-1-50	230-1-50	400-3-50	230-1-50	400-3-50	230-1-50	400-3-50
Compressor type		DC TWIN-ROTARY							
Degree of electrical protection		IP24							
Minimum water content in the primary of the system		17,50	25,00	40,00	40,00	60,00	60,00	75,00	75,00
Code		3630242	3630243	3630244	3630244	3630275	3630276	3630277	3630278

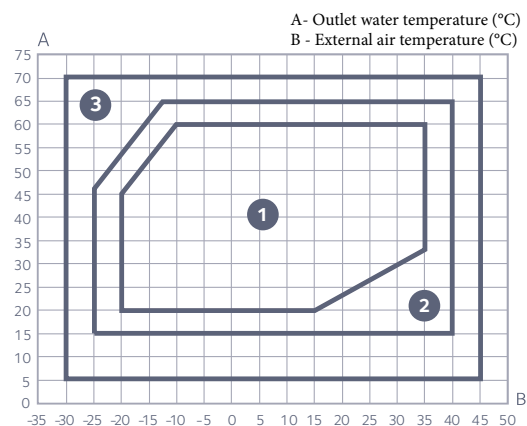
Technical data according to EN 14511

Operation limits in cooling*



*Possibility of compensation relating to the delivery temperature up at -10°C compared to the gray areas of the graph, with an absolute lower limit of 5°C.

Heating operation limits



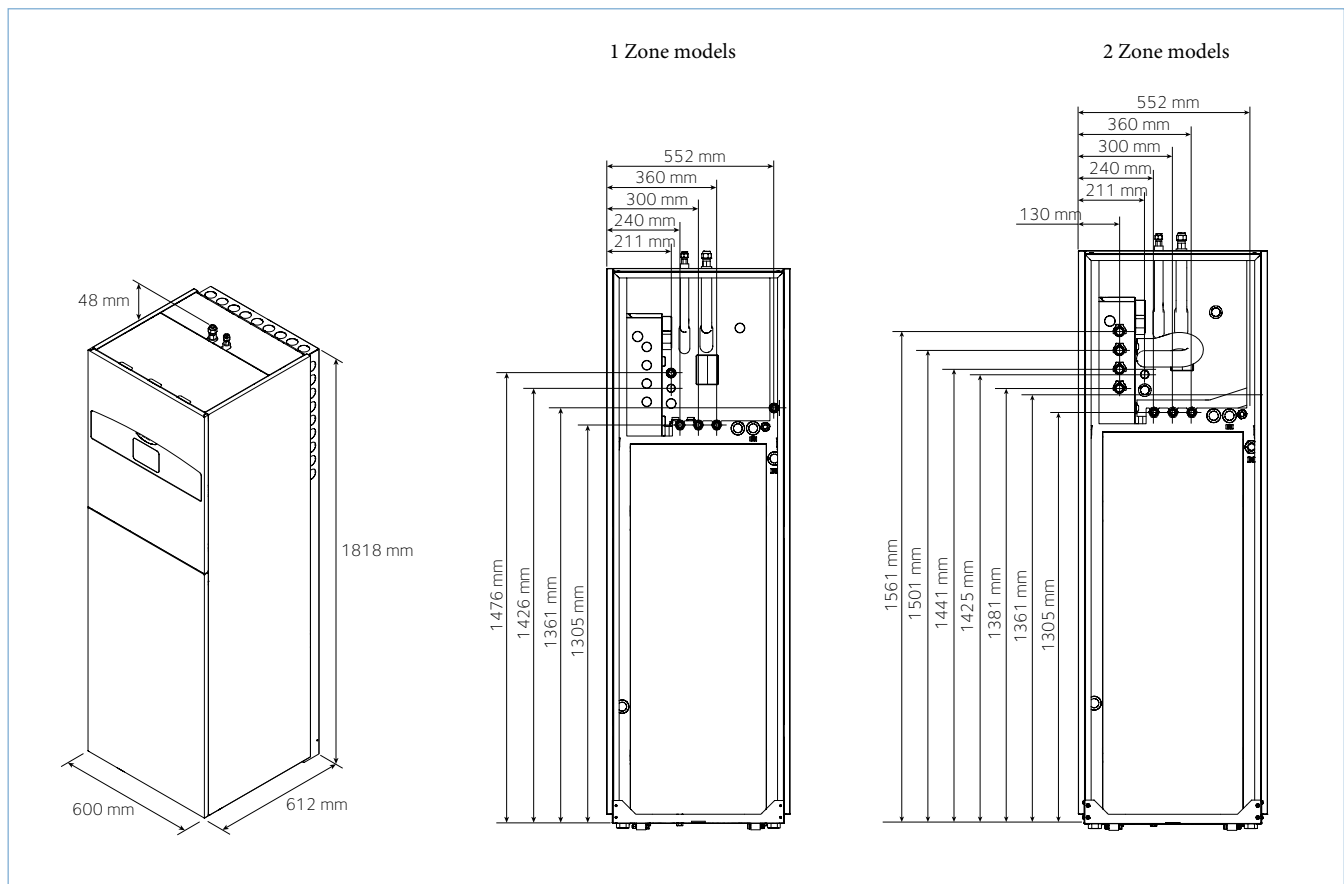
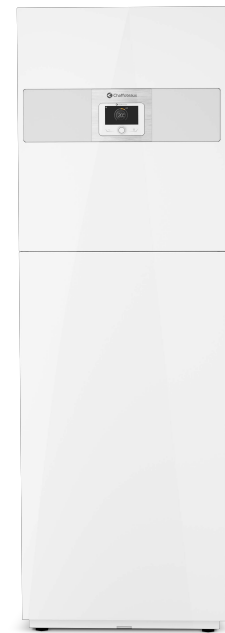
- 1 Unrestricted operation
- 2 External unit operation with possible reductions of capacity
- 3 Operation with back-up electrical resistance necessary



INTERNAL UNIT

ARIANEXT FS S R32

Column internal unit with integrated boiler. Highly insulating coating, magnetic filter and 12 lt expansion tank integrated as standard. Back up electric heaters with modular power (2+2) kW. Expert HD interface as standard which can be integrated on the machine. Boiler set up for domestic hot water recirculation. Integrable accessories.



TECHNICAL FEATURES

ARIANEXT FS S		35 S LINK R32	50 S LINK R32	80 S LINK R32 80S-T LINK R32	120 S LINK R32 120S-T LINK R32	150 S LINK R32 150S-T LINK R32
Voltage/frequency (single phase)	v/ph/Hz	230-1-50				
Voltage/frequency (three-phase)	v/ph/Hz	-				
Indoor unit sound power (1zone/2zone)	dB(A)	37/44			41/43	
Empty weight (1zone/2zone)	kg	133/140		135/142	157/167	
Electrical power resistors	kW	2+2			2+2+2	
Inlet-outlet pipes		3/8" - 5/8"				
DHW connections		3/4" M				
Nominal water flow rate	lt/h	640	860	1400	2100	2600
Expansion tank capacity	lt	12				
Minimum water content in the primary	lt	17,5	25	40	60	75

