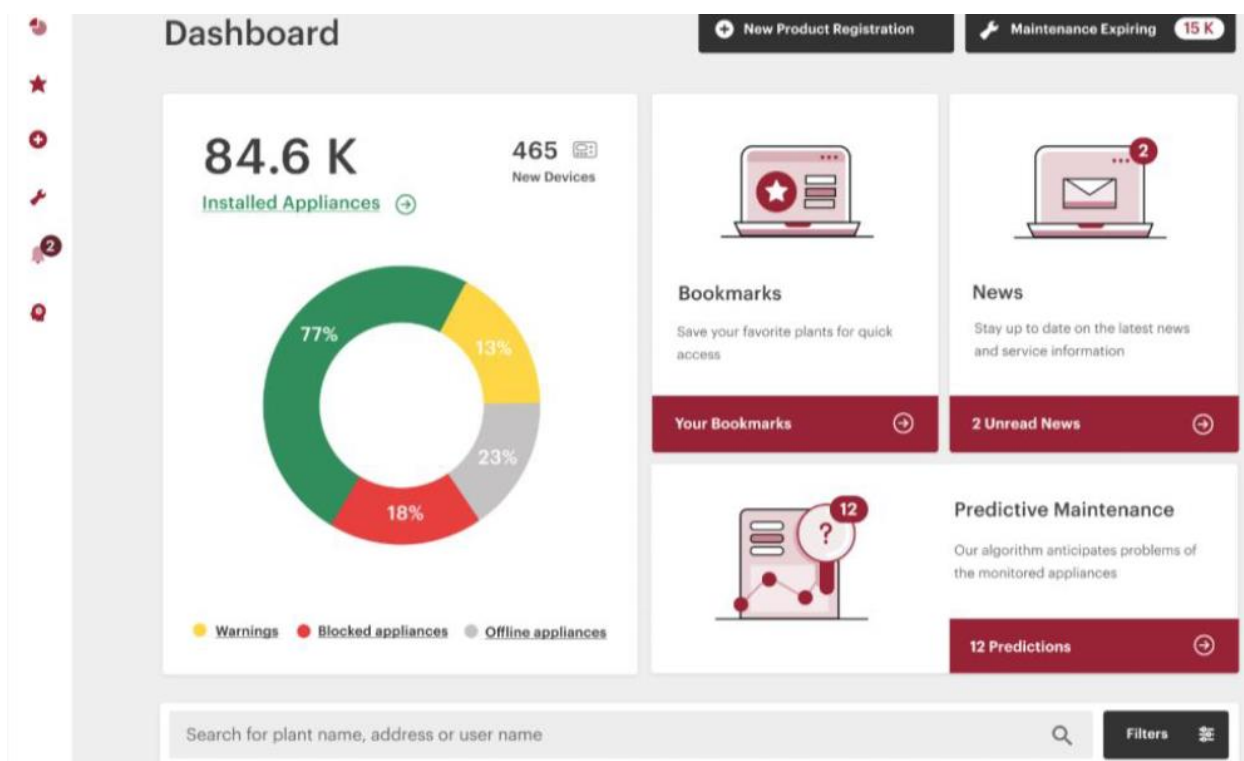


With ChaffoLink Manager, offer your customers a high-end maintenance service for Chaffoteaux boilers and heat pumps. With this platform dedicated to professionals, you monitor all your connected equipment under contract in real time and remotely.

- Access the dashboard bringing together all connected heating systems,
- Have an overview of your fleet at a glance,
- Diagnose and intervene remotely by controlling the main operating parameters of the device.

WITH CHAFFOLINK MANAGER, YOU OPTIMIZE THE TRAVEL OF YOUR TECHNICIANS



- With remote interventions on devices, and the possibility of taking control remotely to help the customer optimize their installation, you limit the number of trips with low added value,
- You are immediately notified by e-mail of blocking anomalies, and you can quickly send a technician to the site,
- You optimize annual interventions with the anticipation of anomalies, the simplified selection of spare parts and the history of breakdowns and operations available.

ChaffoLink Manager guarantees personalized support for your customers and optimized management of your on-site interventions.

WITH CHAFFOLINK MANAGER, YOU BENEFIT FROM SIMPLE AND ACCESSIBLE MANAGEMENT

The ChaffoLink Manager platform is accessible from a website, without any installation. Its content in the form of a dashboard is easy to manage:

- Access to the dashboard bringing together all connected heating systems for an overview of the fleet at a glance,
- Predictive maintenance to limit the occurrence of blocking breakdowns,
- Remote diagnosis and intervention by controlling the main operating parameters of the device. Limits the number of trips,
- Immediate reporting of blocking anomalies by email. Simplified selection of spare parts,
- History of breakdowns and operations kept on the platform,
- Optimization of boiler operation with remote settings.

The screenshot displays the ChaffoLink Manager web interface. At the top, there is a dark blue header with the Chaffoteaux logo and the text "Chaffoteaux". Below the header, a small text block provides location and device information: "bat 1 rue neuve sqpt 7 - Estères(Pas-de-Calais) - 62630" and "Mod: MIRA C GREEN ULTRA 25 FR prod. numéro de série: 33105432219340000006 GW numéro de série: 431903A20373". The main interface is divided into several sections. The top section is labeled "HIVER" and includes a power button and a temperature display of 20.0°. Below this is a section for "TEMPERATURE DE L'EAU CHAUDE SANITAIRE (°C)" with a circular gauge showing 46.0° and plus/minus control buttons. The bottom section is labeled "Zone 1" and includes a "MANUEL" control, a "REGLER LA TEMPERATURE (°C)" section with a gauge showing 21.0° and plus/minus buttons, and a "TEMPERATURE INTERIEURE (°C)" section with a gauge showing 21.1° and plus/minus buttons. At the bottom of the Zone 1 section are "Sauvegarder" and "Actualiser" buttons.

WHICH GENERATOR IS CHAFFOLINK COMPATIBLE WITH?

The ChaffoLink solution is compatible as standard with:

- Chaffoteaux condensing boilers produced from 2019,
- Arianext M monoblock heat pumps produced from 2019,
- Arianext S split heat pumps produced from 2019,
- Arianext M Hybrid hybrid heat pumps produced from 2019.

When the ChaffoLink solution is not included as standard or for existing installations, simply add a gateway accompanied by modulating regulation.

To choose the ChaffoLink solution adapted to the device present at your customers' premises, [download our selection guide](#) .

CHAFFOLINK MANAGER, THE REMOTE DIAGNOSTICS PLATFORM DEDICATED TO PROFESSIONALS

CHAFFOLINK, A CONNECTED DEVICE AT THE SERVICE OF THE USER AND INSTALLER

Since its creation in 1914, Chaffoteaux has never lost sight of its initial objective: to develop ranges of products and services to support and facilitate the daily lives of climate engineering professionals. For several years now, managing heating and DHW equipment has been possible thanks to ChaffoLink. This device is a remote control solution. ChaffoLink comes in the form of a kit including a box which acts as a communication gateway. Connection is possible via GPRS or Wifi. Once the kit is installed, the user can then monitor and manage their various equipment from the dedicated mobile application. The thermostat box allows you to interact with the modulating regulation of the equipment.

CHAFFOLINK MANAGER, A REAL-TIME MONITORING PLATFORM

The ChaffoLink solution allows end users to manage the various parameters of their connected boilers or heat pumps... But when a problem arises, it is to the professional that the customer turns. ChaffoLink Manager thus makes it possible to anticipate these potential malfunctions. Thanks to the ChaffoLink Manager monitoring platform, professionals can remotely monitor their entire fleet of connected boilers and heat pumps.

CHAFFOLINK MANAGER, AN INTUITIVE SOLUTION

ChaffoLink Manager allows you to have an overview of all connected boilers and heat pumps in real time. With each new contract signed, the device is added to the professional's fleet. This solution is intuitive and very easy to use. Thanks to ChaffoLink Manager, the professional can access each client's dashboard. From the platform, it is thus possible to

monitor the operating status of connected devices. But that's not all, the installer can also interact on the main parameters of the boiler or heat pump. In the event of a breakdown, the professional is immediately informed by receiving an email.

CHAFFOLINK MANAGER, AN APPLICATION TO BETTER UNDERSTAND INTERVENTIONS

ChaffoLink is much more than just a connected boiler... Thanks to the complementarity of the service offered by ChaffoLink Manager, the maintenance company can analyze each connected device and rely on precise data. All this information allows professionals to better understand their interventions. In the event of an anomaly, the user can agree to authorize the professional to modify the parameters or resolve the malfunction.

ChaffoLink Manager allows you to anticipate and be ever closer to the customer. Thanks to this system, the diagnosis is established quickly and the maintenance company can respond precisely to all the customer's requests. Thanks to daily monitoring in real time, the maintenance company can troubleshoot without traveling but can also better schedule its maintenance visits, plan the spare parts to order, etc. ChaffoLink allows not only to react but also to anticipate actions to be expected on connected devices!

CHAFFOLINK MANAGER, A TRUE TRUSTED TOOL

ChaffoLink Manager was developed with the aim of offering an adequate and optimal solution for all professionals wishing to offer a unique and innovative service. ChaffoLink Manager allows you to establish an additional connection between the professional and the end user, a unique service allowing you to establish a real relationship of trust between the two parties. Thanks to ChaffoLink Manager, the installer has the opportunity to expand his offering by offering unique functionality that will allow him to differentiate himself from the customer. ChaffoLink Manager is above all a trusted tool to strengthen the link between the end user and the operator.

CHAFFOLINK, A SECURE AND CONTROLLED DEVICE

In a world where technology is evolving at breakneck speed, connected devices are now the norm. These smart devices collect personal data and must be protected. The ChaffoLink connectivity solution is highly secure. In fact, the recorded data evolves in a closed protocol. All information collected is stored and protected by an SSL encryption system. Chaffoteaux concentrates on its core business and ensures that no information leaks... Because this is also working in the quest for user comfort!

CHAFFOLINK, A MANAGEMENT TOOL WITH WIDE COMPATIBILITY

All professionals wishing to develop their services can offer the ChaffoLink system to their customers. This Chaffoteaux system benefits from wide compatibility and can be offered for all gas condensing and low temperature boilers, as well as Chaffoteaux heat

pumps. Indeed, to best meet user needs, two kits are offered: the ChaffoLink Expert Control kit (compatible with boilers sold since 2012) and the ChaffoLink Zone Control kit (compatible with boilers sold between 2008 and 2012). Choosing ChaffoLink means above all opting for peace of mind... The professional can remotely monitor all his boilers while the individual is guaranteed to have the best possible thermal comfort thanks to this advanced technology.